

HOM VERS

Dresser Collection 180

ABOUT PRODUCT

As everything we have done so far, at Homvers, we seek for functionality and comfort, optimising every square metre of the house. We look for solutions to people's real needs, and listening to them has led us to create the wardrobe-dressing room.

Dressing rooms are usually a sign of elegance and good taste in any decoration, fulfilling a practical, efficient and aesthetic function. We concentrate all the storage needs in one, due to its large and easily accessible dimensions. It also saves money and space as we merge the needs of many pieces of furniture into one.

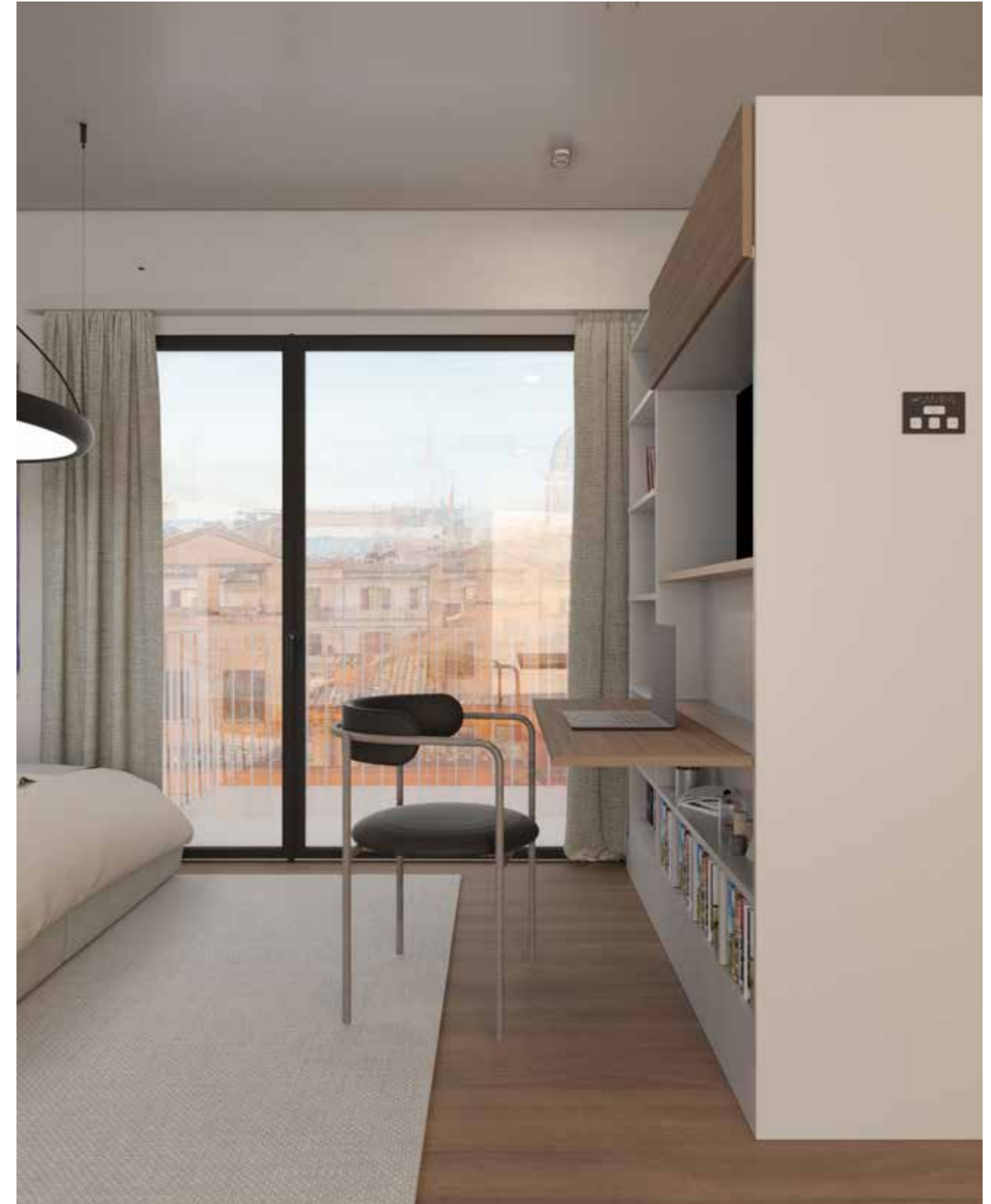
In the constant hustle and bustle of our lives, order and organisation become indispensable allies in achieving efficiency and mental clarity.

Order and organisation become fundamental tools to face daily challenges and achieve success in different areas of our lives. A tidy home conveys peace and serenity, which is why, Homvers wants to make it easy for you.

It Organises all your things with this elegant wardrobe-dressing room, with the quality that Homvers guarantees.

The dream of every woman in a click and also of every man, being able to enjoy his own space, as with this piece of furniture, there is room for everything, occupying the smallest available useful floor space in the house.

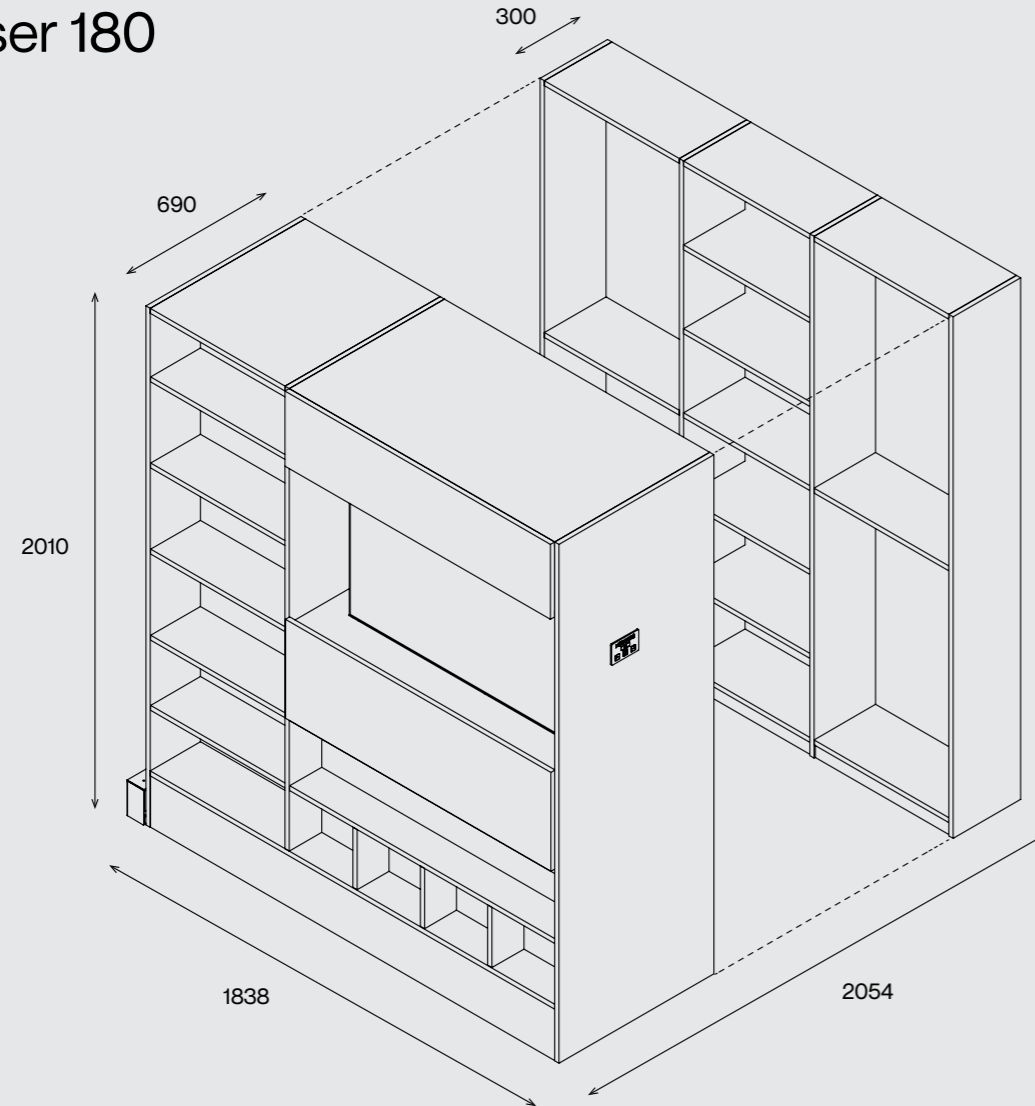
As Pythagoras said: "With order and time you can find the secret of doing everything, and doing it well".







Model: Dresser 180



1. Measures

- 1.1 Minimum measurements for a right setting-up.
- 1.2 T.V. Cavity measurements
Máximum 40" / 1181 x 620 mm
- 1.3 Totally closed cabinet measurements
690 (dynamic part) + 300 (fixed part - optional) x 1838 mm
Possibility to adjust the width from 5 units of the same size.
- 1.4 Desk measurements
1181 x 380 mm

2. Materials

- 2.1 Chipboard on laminate with soft gray finish and natural walnut veneer.
- 2.2 Powder coated steel.
- 2.3 Electronics developed by our own experts.

3. Maintenance

- 3.1 Cleaning mode. Use a wet towel and not use chemical products.
- 3.2 Keep the floor clean and clear.

4. Assembly

The assembly and start-up of the DRESSER 180 model will be executed by our Homvers professionals.

5. Requirements for a right product installation

- 5.1 The floor in all its path must be smooth.
- 5.2 Floor level in 3 m more or less one degree.
- 5.3 Plug of 220 V.

6. Warranty notice

Every product has a three-year warranty, as long as its assembly is done correctly by Homvers experts and use and handling of materials is appropriate.

